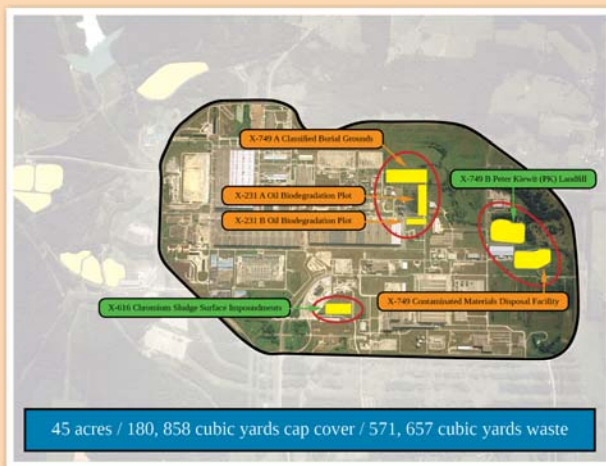




CURRENT SITE CONDITIONS

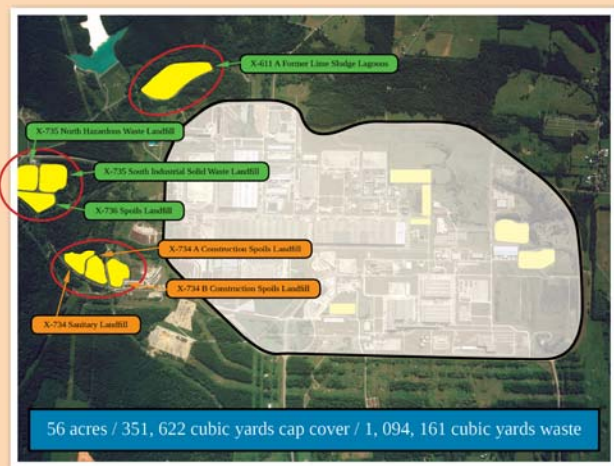
Closed Landfill Disposal Areas

Inside Perimeter Road



Information compiled for PORTS SSAB use by Fluor-B&W Portsmouth, LLC

Outside Perimeter Road



Contains Radiological Materials
Contains Non-Radiological Materials

Landfill Disposal Areas Assessment

- Six general areas.
 - » 3 inside Perimeter Rd. and 3 outside Perimeter Rd.
 - » Approximately 101 acres
 - » 532,480 cubic yards of Cap
 - » 1,665,818 cubic yards of Waste
- No further action is required.
- Regulatory Requirements have been met.
- Surveillance and Maintenance is ongoing.
- Up-gradient and down-gradient groundwater monitoring programs are in place at each landfill.

OUR SITE.
OUR FUTURE.

