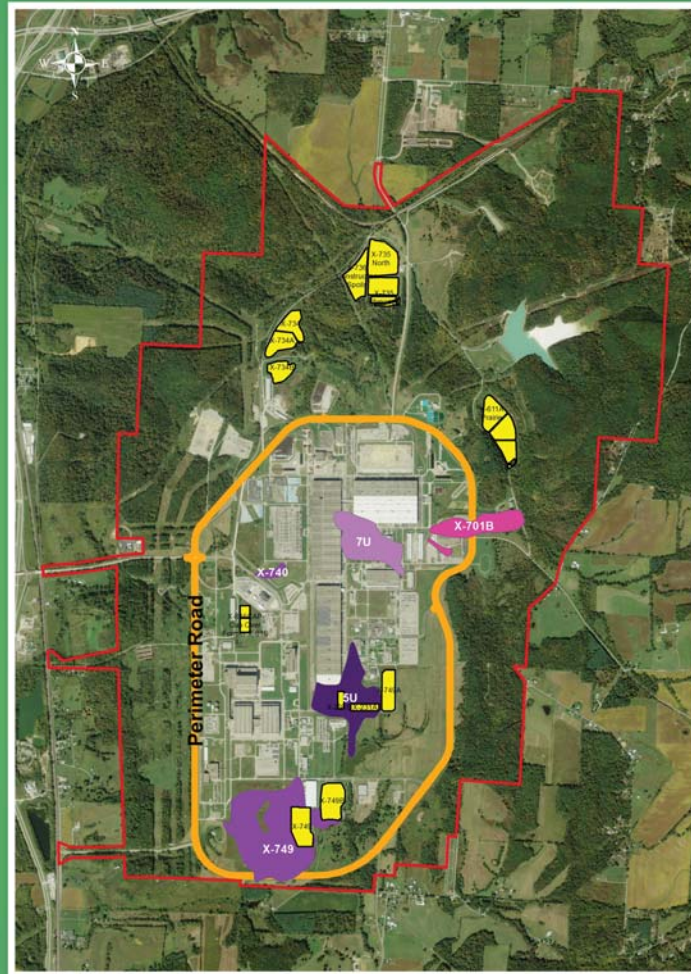




U.S. DEPARTMENT OF ENERGY

CURRENT SITE CONDITIONS

Existing on-site disposal landfills and groundwater plumes



- Site has 16 existing on-site disposal landfills containing clean, hazardous and radioactive wastes. All landfills have been closed through a regulatory process.
- 5 solvent contaminated groundwater plumes are being treated.

OUR SITE.
OUR FUTURE.

