

OUR SITE. OUR FUTURE.

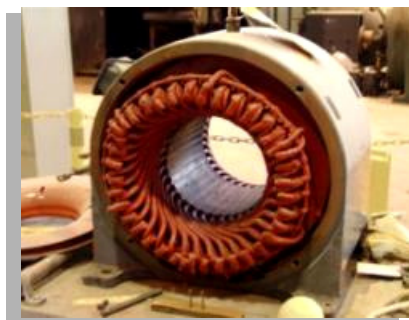
WASTE DISPOSAL

The following three options exist for disposing the waste generated during Decontamination and Decommissioning (D&D) of the Department of Energy (DOE) Gaseous Diffusion Plant located in Pike County, Ohio.

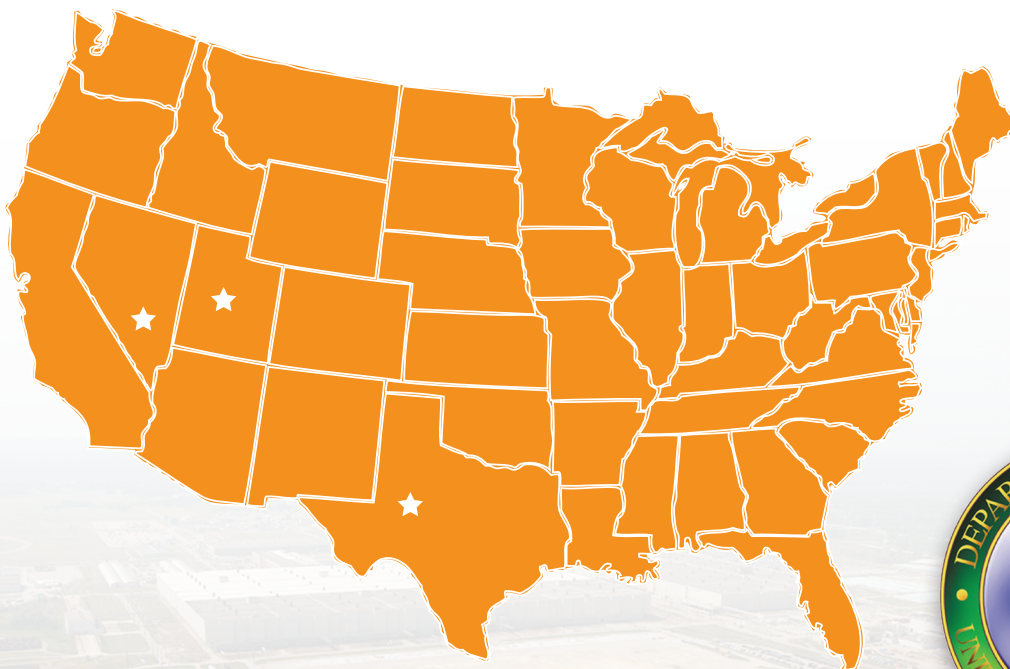
- Recycling and Reuse
- Disposal of the waste in one or more off-site facilities
- Disposal of the waste in an On-Site Disposal Cell

Waste that is “clean,” meaning not radioactive or chemically contaminated, and that cannot be recycled may be disposed in a local commercial landfill. Recycling as much waste as feasible is a DOE priority. It’s currently estimated that about 120,000 cubic yards of clean metal can be recycled. Radiological contamination limits DOE’s ability to recycle most of the waste. For radioactively contaminated waste that cannot be recycled, off-site disposal options include the following facilities:

- DOE-owned Nevada National Security Site; this site was formerly known as the Nevada Test Site,
- Commercially owned EnergySolutions Site in Clive, Utah, or
- Commercially owned Waste Control Specialists in Andrews, Texas.



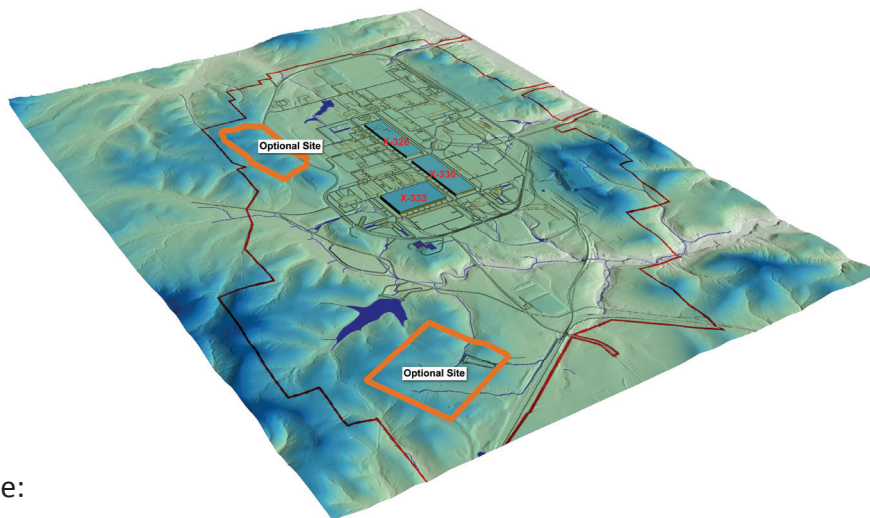
Potentially recyclable items include steel housings and copper windings.



OUR SITE. OUR FUTURE.

WASTE DISPOSAL

The third option for waste disposal is building an engineered On-Site Disposal Cell. In deciding whether or not to build a disposal cell on-site, several technical factors must be considered.



Location factors include:

- ***Making sure the cell is located in best available geology onsite***
- Ensuring cell meets the Ohio EPA requirements
- Ensuring cell location is compatible with future site uses
- Cost associated with building and operating a cell in that location
- Logistics of bringing waste to the cell

Other technical factors that require consideration include:

- ***How much non-recyclable contaminated debris the cell can accommodate***
- ***The amount of soil to be mixed with debris to provide for structural stability of the cell***
- The desire to consolidate any or all of the five landfills currently located onsite into one disposal location
- Waste Acceptance Criteria of the cell
- Desired height of the cell

Based on these criteria, two locations on-site appear to be best locations for on-site disposal if on-site disposal is accepted and selected as a final disposal option. The locations of a potential disposal cell are shown on the figure above as Site C and Site D.

U.S. Department of Energy
Portsmouth Gaseous Diffusion Plant
Public Meeting, Sept. 13, 2011
Waverly High School, Waverly, Ohio

