

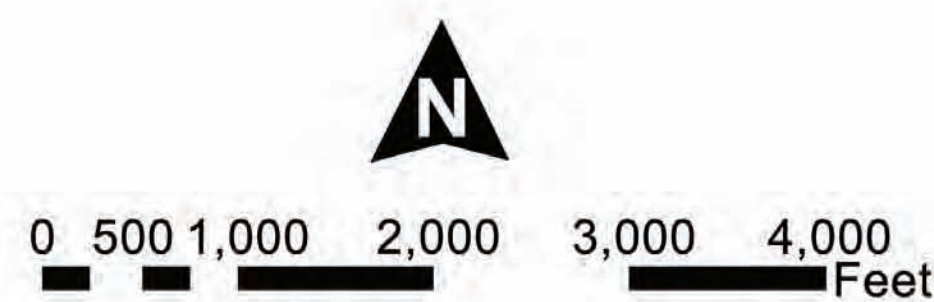
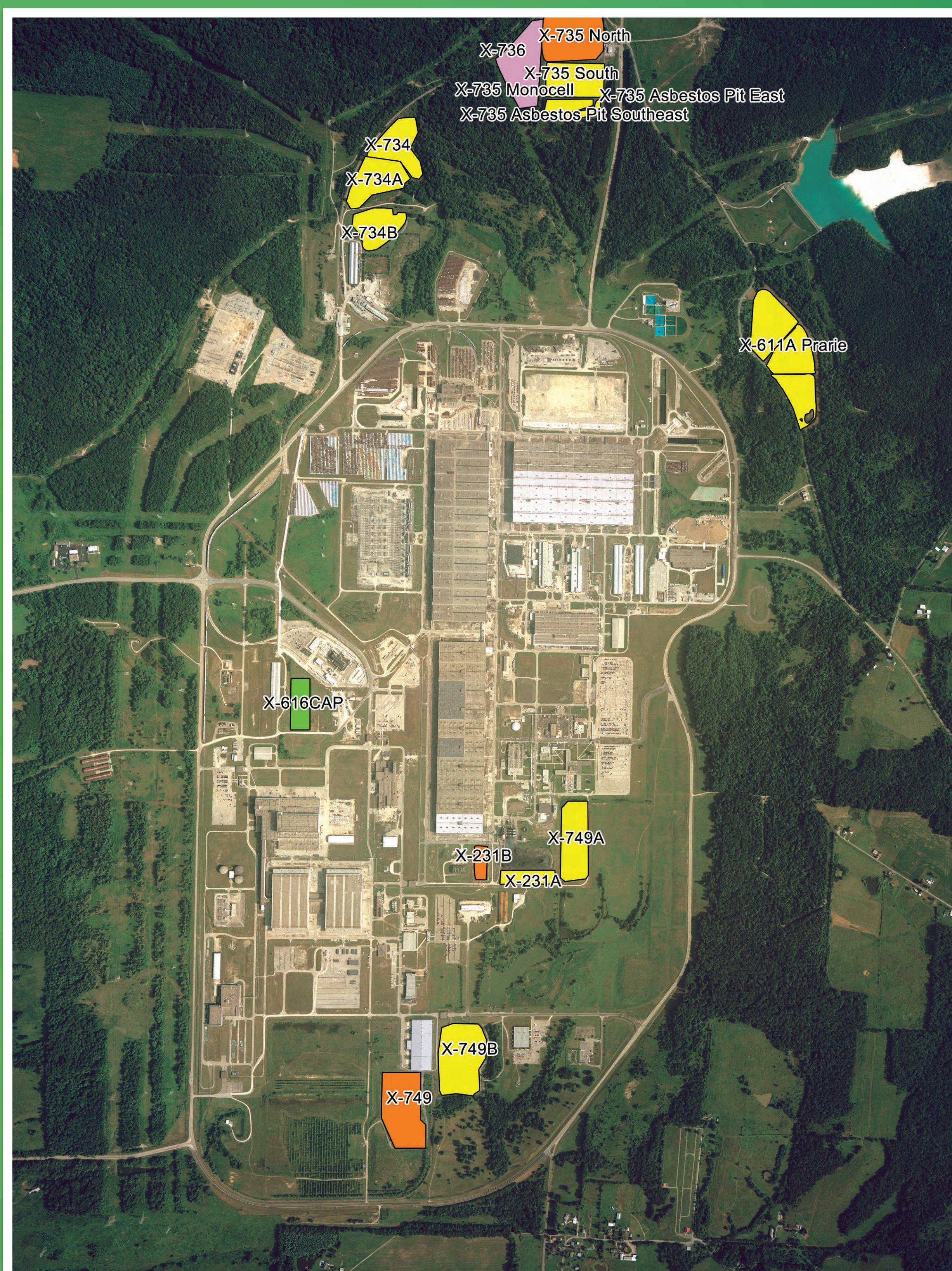


U.S. DEPARTMENT OF ENERGY

WHAT DOES DECOMMISSIONING INVOLVE?

Existing Capped or Closed Landfills and Capped Soil Contamination Areas

- 5 general locations, sixteen closed sites
- Current site landfills cover about 94 acres of site land (85 football fields)
- Landfills contain about 1 million cubic yards of soil and waste (this would fill a train that stretches from Piketon to Cincinnati)



Landfills and Capped Areas

- RCRA Regulated Landfill
- Remediated Capped SWMU
- Capped SWMU - RCRA Landfill Closure
- SWMU Status Undefined

OUR SITE.
OUR FUTURE.

